

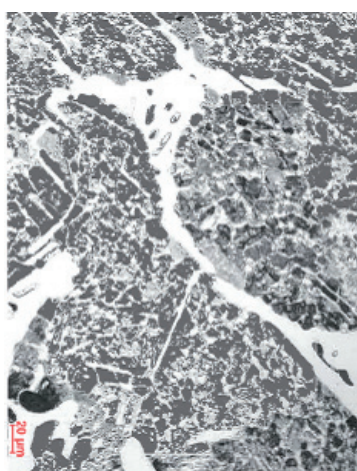
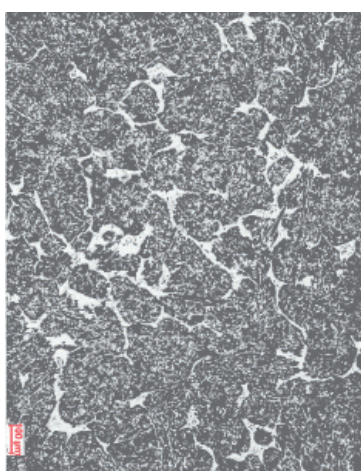
STATICALLY CAST ROLLS

V210 (High hypereutectoid cast steel)

Shell

Chemical composition [%]									Barrel Hardness [HB]
C	Mn	Si	Pmax	Smax	Ni	Cr	Mo	Ti	
1,9-2,1	0,8-1,1	0,7-0,9	0,030	0,025	0,8-1,0	0,9-1,3	0,2-0,3	0,05-0,1	300-360

- Mechanical properties of barrel material (min.):

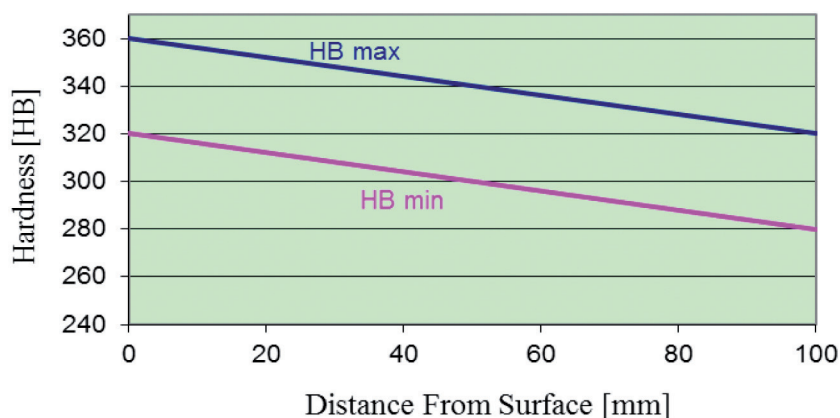


Tensile strength [MPa] | 420-620
Bending strength [MPa] | 670-890

Core

- Characteristic microstructure: Perlitic matrix with finely distributed carbides and transformed ledeburite and free graphite.

Hardness penetration of the rolls, material V210



- Applications: roughing rolls, billet rolls, universal rolls, vertical rolls